

Princeton Society of Musical Amateurs
H.M.S. Pinafore - January 8, 2017



Book by Sir William S. Gilbert
Music by Sir Arthur Sullivan



LEE MILHOUS (Conductor) is a summa cum laude graduate of Westminster Choir College in Princeton, NJ, having received a Bachelor of Music degree in Church Music. He also holds a Master of Music degree in Choral Conducting from Temple University's Esther Boyer College of Music. His teachers included Michael Stairs, Robert Carwithen and Alan Harler.

Lee began his tenure as Organist and Choirmaster at Saint Mary's Episcopal Church in Burlington, NJ in January 2009. At Saint Mary's he manages the Saint Mary's Music Series, which features several varied concerts and Evensongs annually. He previously served in a similar capacity at Saint Paul's Episcopal Church in Doylestown for twenty years. Lee has conducted liturgical and concert performances of Handel's *Messiah* and *Coronation Anthems*, Bach's *Saint John Passion*, *Magnificat* and *Easter Oratorio*; Haydn's *Lord Nelson Mass* and *Saint Nicolai Mass*; Brahms *Liebeslieder Waltzes*, and Requiem's by Fauré, Mozart, and Duruflé; among many other works. Additionally, he has served Choir Director and Accompanist at Temple Beth Hillel/Beth El in Wynnewood, on the Philadelphia Main Line since 1988. Lee also serves as Organist for The Evergreens Chapel (Moorestown, NJ), Associate Organist at Saint Martin of Tours Parish (New Hope, PA),

Music Director and Conductor for the Bucks County Gilbert and Sullivan Society, and Accompanist/Assistant Conductor for The Valley Forge Chorale, all Lenape Middle School (Doylestown, PA) and Richboro Middle School (Richboro), PA choirs, and Sharim v'Sharot, a Jewish community chorus based at Rider University. Lee supplies for numerous parishes and synagogues throughout the region.

This is Lee's second year leading the Musical Ams' G&S production – and he is thrilled to be back! His other musical theater credits include productions of *A Grand Night for Singing*, *Beauty and the Beast*, *Bye-Bye Birdie*, *Cats*, *Children of Eden*, *Fiddler on the Roof*, *Funny Girl*, *Guys and Dolls*, *Hairspray*, *Hello Dolly*, *How to Succeed in Business Without Really Trying*, *Joseph and the Amazing Technicolor Dreamcoat*, *Milk and Honey*, *My Fair Lady*, *My Favorite Year*, *Patience*, *Princess Ida*, *Oliver!*, *Rags*, *Rent*, *The 25th Annual Putnam County Spelling Bee*, *The Mikado*, *The Music Man*, *The Pajama Game*, *The Pirates of Penzance*, and *The Sound of Music* as both Music Director and/or Conductor.

Lee is also active as a concert organist. He has proudly played in recital through Cunningham Piano and Organ promoting the new Rogers Infinity series organs, and in 1992 he performed a solo at Carnegie Hall as part of an Opera Orchestra of New York production of Richard Wagner's *Rienzi*. Lee enjoys occasionally playing French horn with the Delaware Valley College Community Band and the Doylestown Summer Community Band, as well as piano for the Doylestown Symphonic Winds. He resides in Doylestown, PA with his two sons Elliot and Christopher, their Maine Coon cat Phin, and a rescue turtle named Bill.

Princeton Society of Musical Amateurs

H.M.S. Pinafore - January 8, 2017

CAST



GEORGE ACHILLES (*The Rt. Hon. Sir Joseph Porter, 1st Lord of The Admiralty*) has sung the roles of Major-General Stanley in *Pirates of Penzance*, Sir Joseph Porter, KCB, in *H.M.S. Pinafore*, the Duke in *Patience* and in the chorus of *Princess Ida* and *The Mikado* with the Bucks County Gilbert & Sullivan Society. George enjoys singing with the choral group *Cantus Novus* as well as with the St. Paul's Episcopal Church Choir, Doylestown, and at church weddings.



ROBERT BINKLEY (*Captain Corcoran, Commander of the H.M.S. Pinafore*), founder and director of Bucks G&S. A veteran of 40 or so G&S productions, Bob has played dozens of roles, built sets, directed and otherwise aided and abetted in many companies in the Delaware Valley over more years than he cares to think about. Happy to be part of this event!



DEREK HESS (*Ralph Rackstraw, Able Seaman*) has studied voice under Francine Black, Tamara Black, and Dr. Emily Bullock and owes his success to their guidance and support. Derek has been seen in several performances with the Gilbert and Sullivan Society of Chester County where he portrayed Samuel from *The Pirates of Penzance*, Strephon from *Iolanthe*, Dr. Daly from *The Sorcerer*, Edwin The Defendant from *Trial by Jury*, Archibald Grosvenor from *Patience*, and Jack Point from *Yeomen of the Guard*. With the Bucks County Gilbert and Sullivan Society he played Florian from *Princess Ida* and Ralph Rackstraw in last year's production of *H.M.S. Pinafore*. Derek can be seen with the GSSCC later this month as Robin Oakapple in their production of *Ruddigore*.



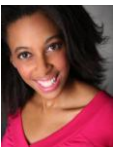
MICHAEL DUTKA (*Dick Deadeye, Able Seaman*) is delighted to return to the Bucks County Gilbert & Sullivan Society after having played Arac in *Princess Ida*, as well as the title role in *The Mikado*. Other G&S roles include The Usher in *Trial by Jury*, Sergeant Meryll in *Yeomen* and Dick Deadeye with The Savoy Company, Roderick in *Ruddigore* with the Gilbert and Sullivan Society of Chester County, The Sergeant of Police in *Pirates* and Dick Deadeye with the Rose Valley Chorus and Orchestra, and Private Willis in *Iolanthe* and Dick Deadeye with Thespiis, Etc. (somehow playing a disliked hunchback seems to be his niche). An open-minded chap, Michael has even performed non-G&S roles including Emile DeBecque in *South Pacific*, The Commendatore in *Don Giovanni*, both Bartolo and Antonio in *The Marriage of Figaro* and Melchior in *Amahl and the Night Visitors*. Michael is a recent transplant from Doylestown to Kintnersville, PA.



FREDERIC DITTMANN (*Bill Bobstay, Boatswain*) is thrilled to be reprising this role for BCG&S Society in this production of *H.M.S. Pinafore*. He has played the Boatswain's Mate before with the Gilbert & Sullivan Society of Chester County, as well as Sir Marmaduke (*The Sorcerer*), Mountararat (*Iolanthe*), Sergeant of Police (*The Pirates of Penzance*), Don Alhambra (*The Gondoliers*), Colonel Calverley (*Patience*) and the Usher (*Trial by Jury*). Fred has performed in the Philadelphia Gilbert & Sullivan Union productions of *Iolanthe* and *The Pirates of Penzance* in Buxton, England. Other credits include singer and actor with the Christmas Revels, Choral Arts Society of Philadelphia, and the Episcopal Academy Players. Fred currently sings with a local *a capella* group, the Tonics. Offstage, he is a senior vice president with Pennsylvania Trust Company, and serves on various charitable boards.



ROBERT KINNEY (*Bob Becket, Carpenter's Mate*) is a veteran of over half of the Gilbert and Sullivan repertoire, most recently playing the role of Bob Becket in HMS Pinafore last June. He actually enjoys playing the role of Bob on a daily basis as well...



JENNY CAREY (*Josephine, The Captain's Daughter*) is an award-winning singer and award-nominated actress whose "stage presence is matched by her wonderful voice" (The Suburban, Montreal) and who delivers a "spectacular acting and vocal performance" (Stage Magazine, New Jersey). Jenne has performed in prestigious venues across the United States, Canada, Europe, and Japan and her many roles include Adina (Elixir of Love), Linda (Linda di Chamounix), and The Queen of the Night (The Magic Flute). Jenne was among a select group of singers chosen to share the stage with Andrea Bocelli and other guest artists during his "Live in Central Park" concert. Jenne is in demand as a concert soloist and her repertoire includes Handel's Messiah, Fauré's Requiem and Bach's Cantata 51, Jauchzet Gott in allen Landen. An avid choral singer, Jenne was the only female selected to represent Canada in the World Youth Choir on its tours throughout Israel and Europe.



THERESA SWARTZ (*Cousin Hebe, Sir Joseph's First Cousin*) has appeared with many G&S groups in the area. Roles include both Ida and Psyche in "Princess Ida", Elsie Maynard in "The Yeomen of the Guard", Katisha in "The Mikado", and Buttercup in "HMS Pinafore". Non G&S roles include Linda Loman in "The Death of a Salesman", Kate Keller in "The Miracle Worker", Guenevere in "Camelot", and Valencienne in "The Merry Widow".



ELISE BJORDAMMEN (*Mrs. Cripps/Little Buttercup, a Portsmouth Bumboat Woman*) is delighted to bring back this role for today's festivities in Princeton. She sings with the Opera Delaware chorus and is looking forward to a spring production of Rossini's *Semiramide* at The Grand Opera House in Wilmington, DE. This past summer, Elise sang the role of "Alisa" from *Lucia di Lammermoor* with Delaware Valley Opera Company at the Venice Island Performing Arts Center in Philadelphia. Her favorite Gilbert & Sullivan role was performing the spirited "Daphne" in the rarely staged, *Thespiis*!

...WITH YOU(!) IN A CHORUS OF FIRST LORD'S SISTERS, HIS COUSINS, HIS AUNTS, SAILORS, MARINES, AND MORE